



Stormwater Program Mt. Juliet, TN

Why a Stormwater Utility?



Stormwater Regulations



Regulatory Requirements

- Two major components:
 - Water quality
 - Water quantity
- Quality: how clean the water is
- Quantity: the amount of flow from developments



Water Quality

- Water quality:
 - Clean Water Act of 1972
 - TCA Water Quality Control Act
 - Both of the above are governed through TDEC
 - “MS4” permit
- Municipal Separate Storm Sewer System permit
 - Referred to as “MS4”
 - Governs the quality of water in the state
 - Between MJ and TDEC
 - Mostly impacts new construction



Water Quantity

- Water quantity
 - MS4 permit requires quantity regulations
 - Shall not have negative impact upstream or downstream
 - Governed by local regulations
- MJ Code:
 - There shall be no increase in flow
 - Basically post construction must be at or below pre-construction



Current Program



What We're Doing

- Program management
 - Compliance with TDEC MS4 permit
- Oversee quality and quantity on all new developments
 - Design review and approval
 - Construction inspection
 - Post-construction verification
- Inspect existing water quality devices
- Program education



Level of Service

- A through F
 - A: Comprehensive planning, fully preventative, expanded CIP
 - F: No planning, non-responsive, no CIP
- Where are we now?
 - Reactive, not proactive, no CIP, maintaining permit compliance
 - Approximately C-/D+



Current Funding

- Funding:
 - Fully funded by developments
 - No funds from General Fund
 - Will not support CIP
 - Minimal dedicated staff
 - No funds for maintenance
- Are we meeting citizen's expectations based on funding?
 - We say "no" or "not now" very often
 - No funding or authority for work outside of ROW



Potential Program



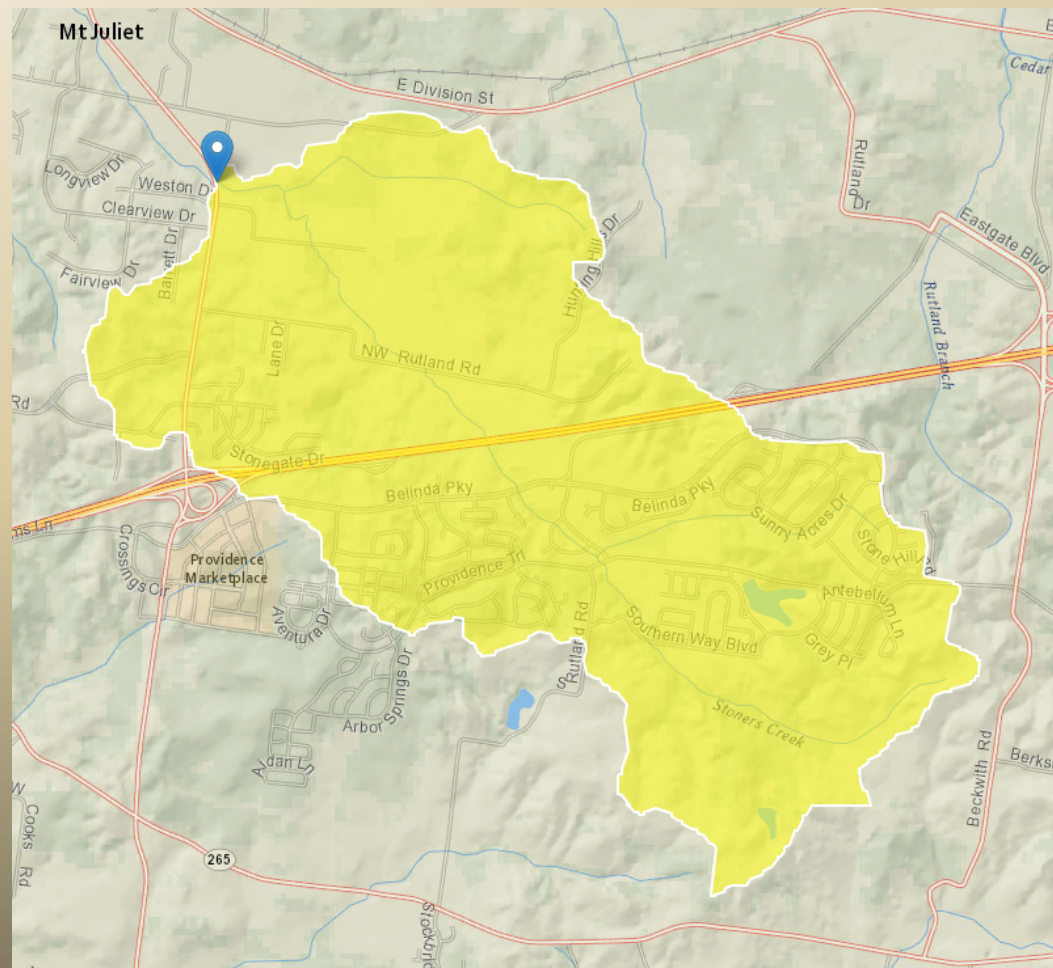
What We Could Be Doing

- Proactive and preventative planning
- Capital Improvement Plan
 - Flood study program
 - Creating flood storage
 - Upgrading older neighborhoods
- Acquire flood-prone properties
- Enhance permit performance
- Stormwater code rewrite
- Maintenance/replacement of older infrastructure
- Street sweeping & catch basin cleaning



Flood Mitigation Example

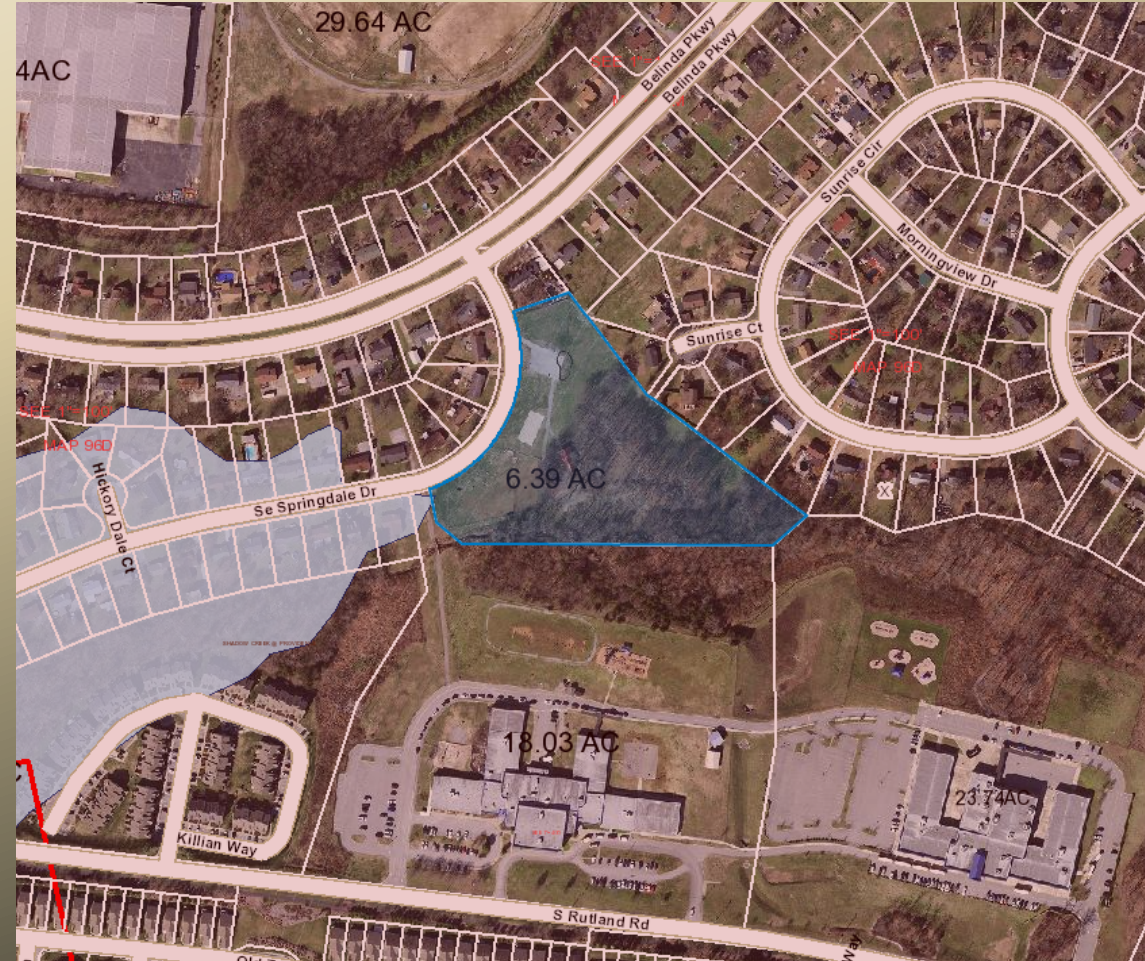
- Drainage basin at Valley Center:





Flood Mitigation Example, Cont'd

- City property
- Opportunity to create flood storage area
- Could help reduce flooding on SE Springdale
- With other projects, could help reduce flooding at Valley Center and beyond





Level of Service

- What level of service do we want to provide?
 - What do we want the Stormwater Program to be?
- A through F
 - A: Comprehensive planning, fully preventative, expanded CIP
 - F: No planning, non-responsive, no CIP
- What services do we want to provide?
 - Hire crews for expansive maintenance in-house
 - Use all funds for a full CIP
 - Hybrid model of maintenance crews plus CIP
 - Answers determine the user fees



Stormwater Utility

- An enterprise fund similar to the Sewer Utility
 - Dedicated staff for maintenance and/or construction
 - Annual funding based on user fees
- Paid for by single family unit or equivalent
 - Typically \$2-\$6 per home per month
 - Commercial businesses pay a rate equivalent to single family unit
 - Can be collected monthly or yearly



Feedback Time